



The Lakeside

109 Stonemere Close

1704 Sq.Ft. (total 2674 Sq.Ft.)

Bungalow

European Style Package

10' Main Floor Ceilings

Hardwood and Tile Flooring

Granite Countertops with Under-mount Sinks

Incredible Fully Developed Basement

Envious Kitchen

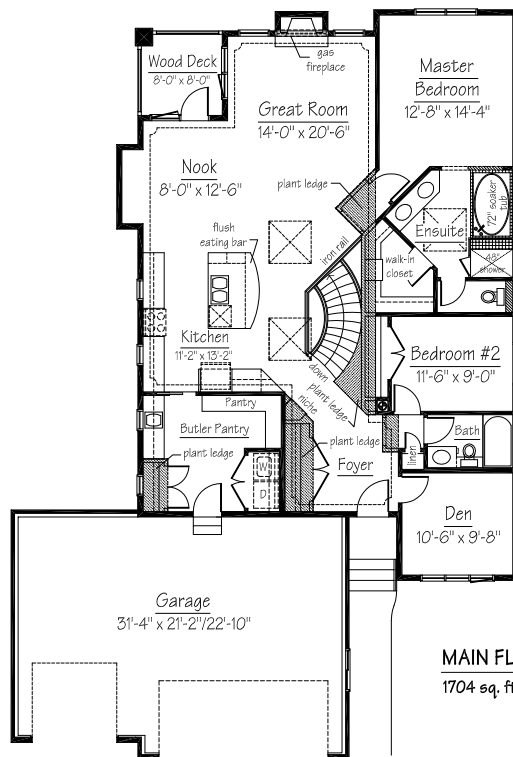
Fantastic Curved Stairwell

Triple Car Garage

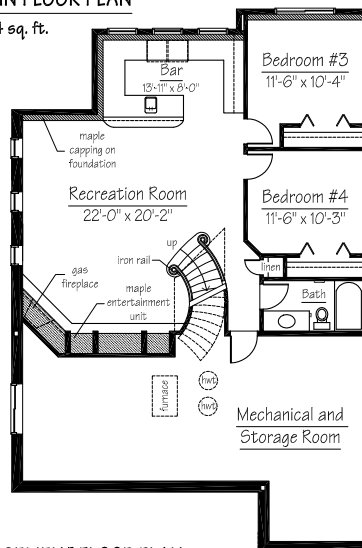
Former Show Home "Too Many Upgrades To Mention."

~~\$744,200~~
\$775,980

Includes home, land & gst



MAIN FLOOR PLAN
1704 sq. ft.



BASEMENT FLOOR PLAN
970 sq. ft.



Showhome Hours:

Monday - Thursdays 2-8 pm
Saturday, Sundays & Holidays
noon - 5 pm

Contact Scott Kimmins

@ 403-554-7258

for information on this home or other models available for quick possession.

reidbuilthomes.com

REIDBUILT HOMES
MASTER BUILDER

Due to ongoing improvements resulting from continuing research and development programs, we reserve the right to alter design or specifications without notice or obligation. All illustrations are the artists concepts. This plan is the property of Reid Built Homes Ltd. All rights reserved.