

@xpress home



The Stoneridge

211 Valley Pointe Place NW

1306 Sq.Ft. (total 2503 Sq.Ft.)

Bungalow

European Style Package

Full Basement Development

Walkout Basement

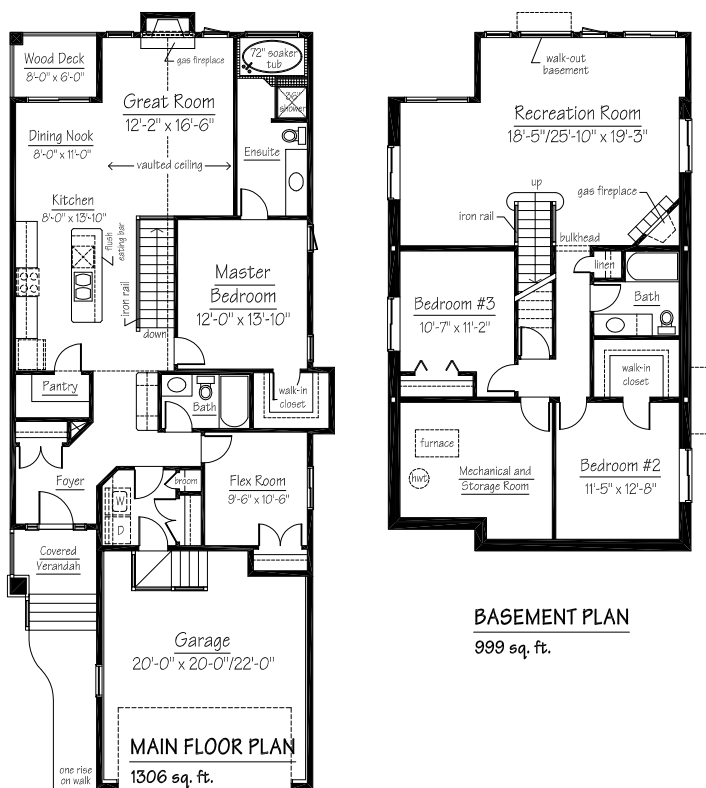
Tile and Hardwood Flooring

Granite Countertops

Natural Gas Fireplaces on main and basement levels

\$570,940

Includes home, land & gst



VALLEY POINTE
ESTATES

Showhome Hours:
Monday - Thursdays 2-8 pm
Saturday, Sundays & Holidays
noon - 5 pm

Contact Rudy Skapin @
403-992-1950 or 403-452-7447
for information on this home or other
models available for quick possession.

reidbuilt homes.com

REIDBUILT HOMES
MASTER BUILDER

Due to ongoing improvements resulting from continuing research and development programs, we reserve the right to alter design or specifications without notice or obligation. All illustrations are the artists concepts. This plan is the property of Reid Built Homes Ltd. All rights reserved.