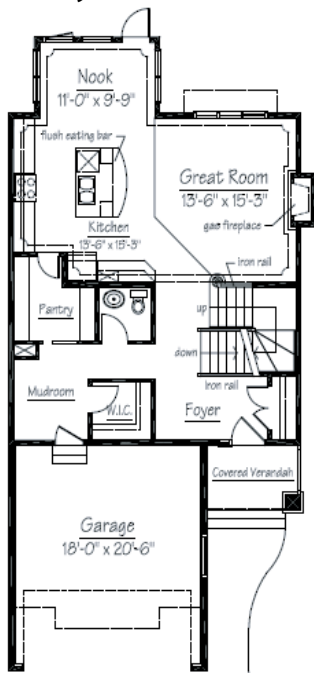


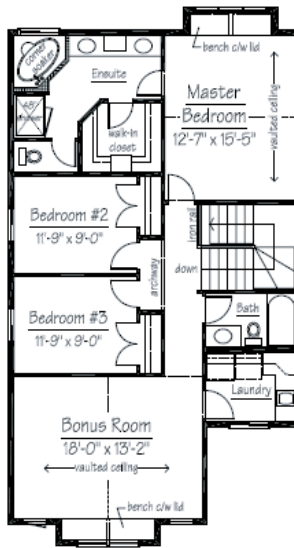
@xpress home



11 Baywater Court / 2124 sq.ft. Two Storey



MAIN FLOOR PLAN
952 sq. ft.



UPPER FLOOR PLAN
1172 sq. ft.

****IMMEDIATE POSSESSION****



Dream of living by the sea? Bayside offers a unique lifestyle for the land-bound sea buff. Bayside brings Maritime inspired architecture to the Prairies.

BAYSIDE
E • S • T • A • T • E • S

Addison
\$470,600.00

inc. GST & Lot

- Contemporary Style Package*
- Granite countertops in Kitchen
 - Iron railing
 - Hardwood and tile flooring throughout
 - Knockdown ceilings and rounded corners
 - 9' Main floor ceilings
 - Gas Fireplace
 - Granite countertops in upstairs bathrooms

Contact Lynn Abrams 403 510 0357 or Chris Herriman 403 542 5545 in Kings Heights for additional information on this home or other models we currently have available for quick possession.

Show Home Hours:
Monday - Thursday 2 to 8 pm
Saturday, Sunday and Holidays 12 to 5 pm

reidbuilthomes.com

REIDBUILT HOMES
MASTER BUILDER

Due to ongoing improvements resulting from continuing research and development programs, we reserve the right to alter design or specifications without notice or obligation. All illustrations are the artists concepts. This plan is the property of Reid Built Homes Ltd. All rights reserved.