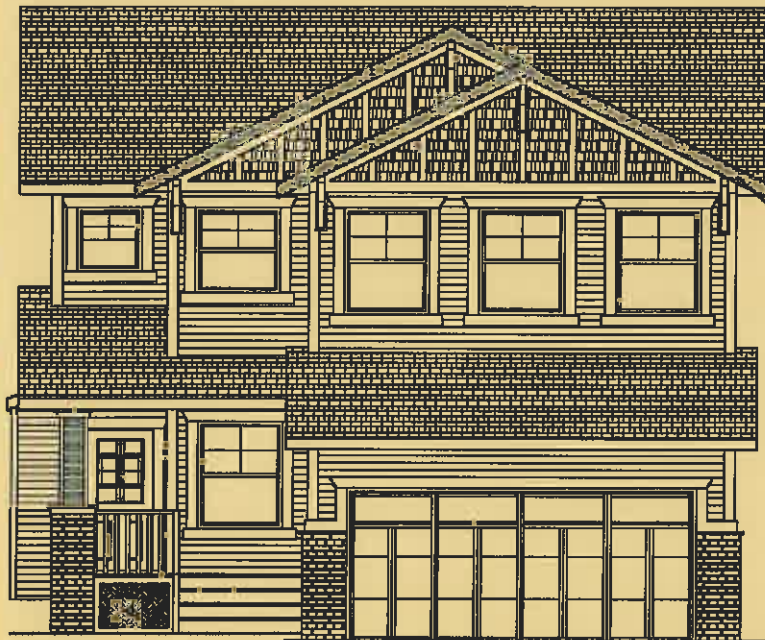
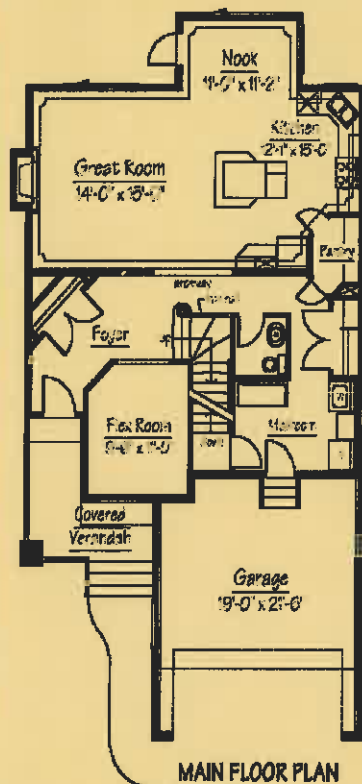


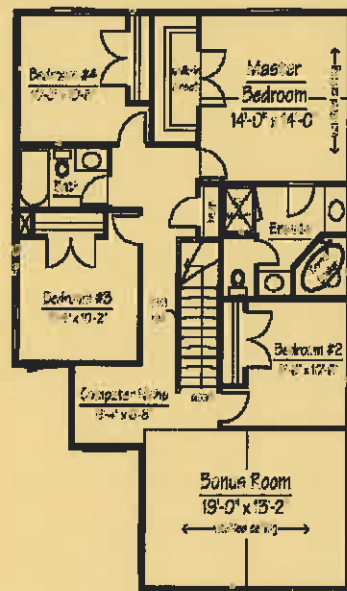
@xpress home



7 Baywater Court / 2464 sq.ft Two Storey



MAIN FLOOR PLAN
1122 sq. ft.



UPPER FLOOR PLAN
1342 sq. ft.

****IMMEDIATE POSSESSION****



Dream of living by the sea? Bayside offers a unique lifestyle for the land-bound sea buff. Bayside brings Maritime inspired architecture to the Prairies.

BAYSIDE E•S•T•A•T•E•S

Windsor

\$492,679.00

inc. GST& Lot

Contemporary Style Package

- Granite countertops in Kitchen
- Iron railing
- Hardwood and tile flooring throughout
- Knockdown ceilings and rounded corners
- 9' Main floor ceilings
- Gas Fireplace

Contact Lynn Abrams 403 510 0357 or
Chris Herriman 403 542 5545 in Kings Heights
for additional information on this home or other
models we currently have available for quick
possession.

Show Home Hours:
Monday - Thursday 2 to 8 pm
Saturday, Sunday and Holidays 12 to 5 pm

REID BUILT HOMES
MASTER BUILDER

reidbuilt homes.com

Due to ongoing improvements resulting from continuing research and development programs, we reserve the right to alter design or specifications without notice or obligation. All illustrations are the artists concepts. This plan is the property of Reid Built Homes Ltd. All rights reserved.