

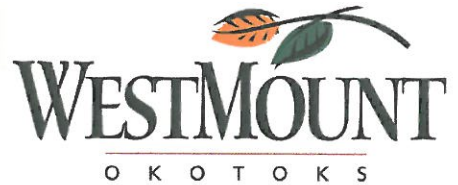
The Rockyview

1853 sq.ft

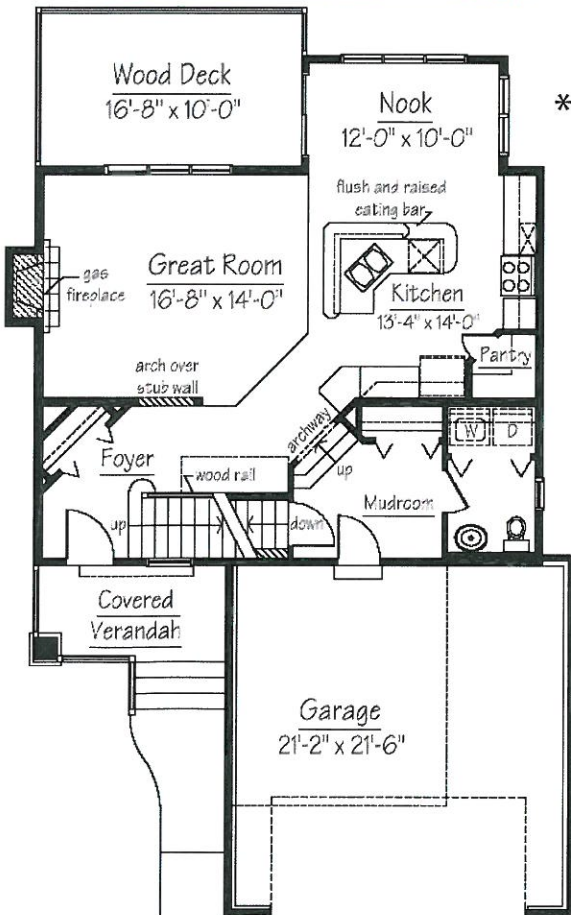
Upgraded Features

Classic Style Package

- Knock down ceilings
- 9' main floor ceilings
- Gas Fireplace
- Paintgrade railing
- Walk-out basement
- 3-PC rough in plumbing in basement

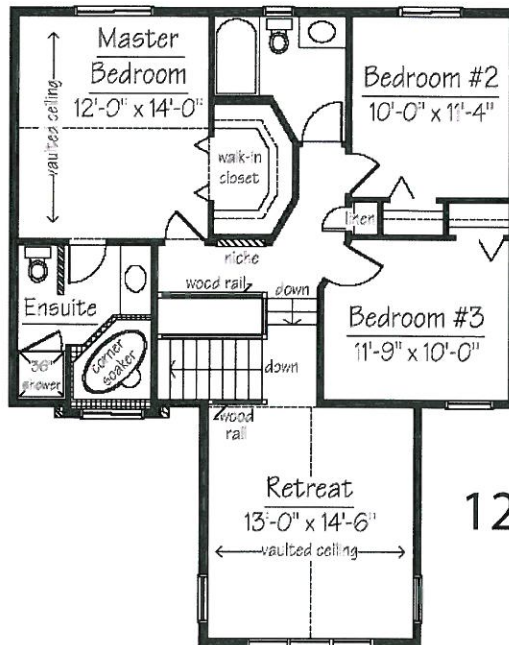


**** FEBRUARY POSSESSION ****



MAIN FLOOR PLAN

891 sq. ft.



UPPER FLOOR PLAN

962 sq. ft.

129 Westmount
Green