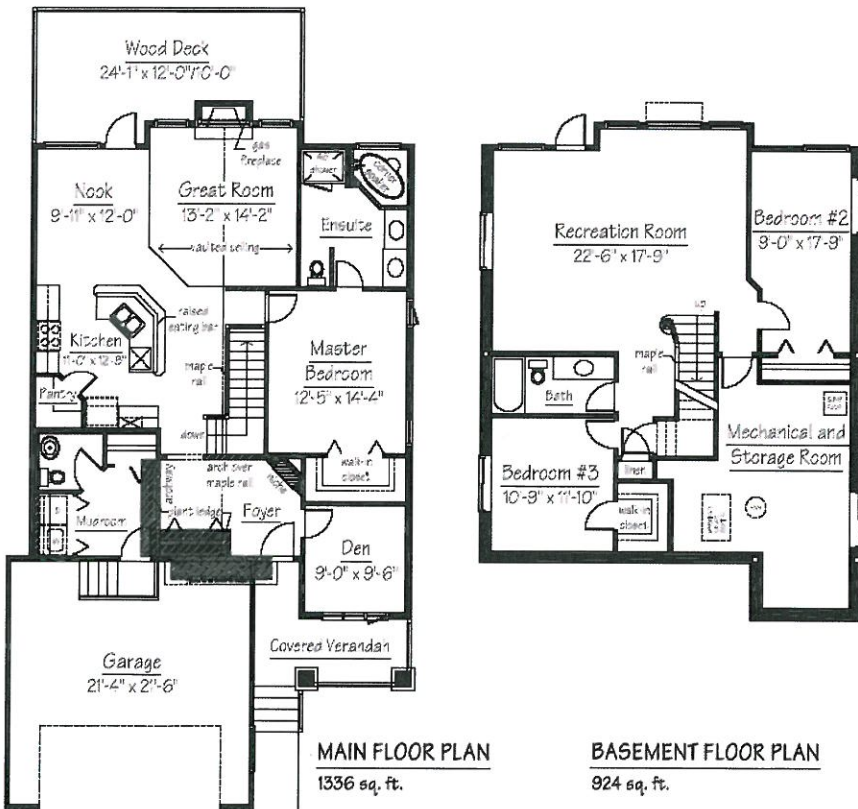




108 Aspenmere Close / 2260 sq.ft Bungalow



Westmere's crown jewels are the Estates of Westmere and The Shores of Westmere Estates. Each neighborhood has its own character, but they share oversize lots and close proximity to an extensive range of services and amenities.

**Frontier**  
**\$ 563,131.00**  
inc. GST & Lot

*European Style Package*

- Granite countertops in Kitchen
- Hardwood and tile flooring throughout
- Knock down ceilings and rounded corners
- 9' Main floor and basement ceilings
- Gas Fireplace
- East Facing, Walk out lot
- Full Basement Development

Contact 403 204 3994 in Westmere for additional information on this home, models we offer or homes we have available in other areas.

Show Home Hours:  
 Monday - Thursday 2 to 8 pm  
 Saturday, Sunday and Holidays 12 to 5 pm

**\*\*NOVEMBER POSSESSION\*\***